

# 2004 IMAGES

THE GALLERY THE GALLERY THE GALLERY

4.1

4100-001



In Metru Nui, city of legends, danger is growing. A powerful plant, the Morbuzakh, has spread its vines throughout the city and threatens to bring down what the Matoran have built.

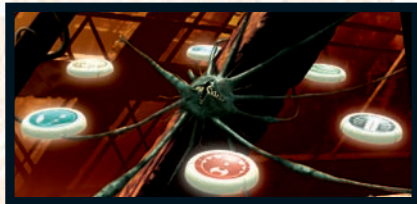
From the transport chutes of Le-Metru.

4100-002



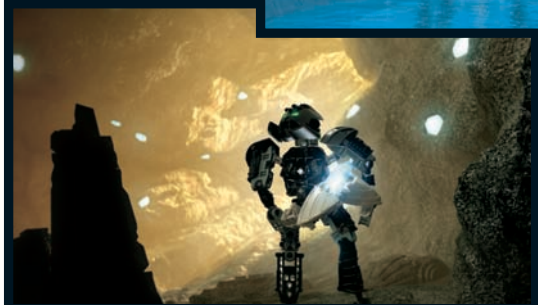
The Toa must learn which of the six Matoran is planning to betray the city.

4100-004



Then pit their power and skill against the Morbuzakh in a final showdown inside Ta-Metru's Great Furnace.

4100-003



But finding and saving the Matoran from dangerous traps is just the beginning.

4100-005

# 2004 IMAGES

4.2

THE GALLERY THE GALLERY THE GALLERY

Brave great peril in the most mysterious areas of the city.



4100-006

To the crystal Knowledge Towers of Ko-Metru, the Toa Metru must search for the missing Matoran.



4100-008

4100-007



4100-009

To the sub-levels of the Onu-Metru Archives.



Now six new heroes – the Toa Metru – must launch a desperate search for the Matoran and the Great Disks they hide before time runs out!