



2 of 3

BIONICLE

METRU NUI - CITY OF LEGENDS



FRANK
Elliott 9.05

LEGO

ESCAPE
MANGER
Lunchables
LUNCH COMBINATIONS



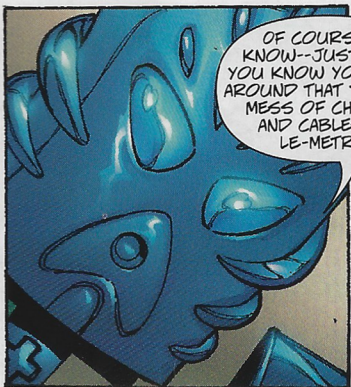
THE ISLAND CITY
OF METRU NUI.

NOKAMA, TOA METRU OF WATER,
AND MATAU, TOA METRU OF AIR,
ARE SEARCHING FOR ONE OF SIX
GREAT DISKS NEEDED TO SAVE
THE CITY FROM THE RAMPAGING
MORBUZAKH PLANT.

I HAVE NEVER
SEEN ANYTHING
LIKE THIS. WHAT COULD
HAVE DRIED UP A
PROTODERMIS CANAL
OF THIS SIZE?

DRY OR WET,
I AM NOT ONE
FOR FOOTWALKING,
NOKAMA. ARE YOU
SURE YOU KNOW
WHERE WE'RE
GOING?

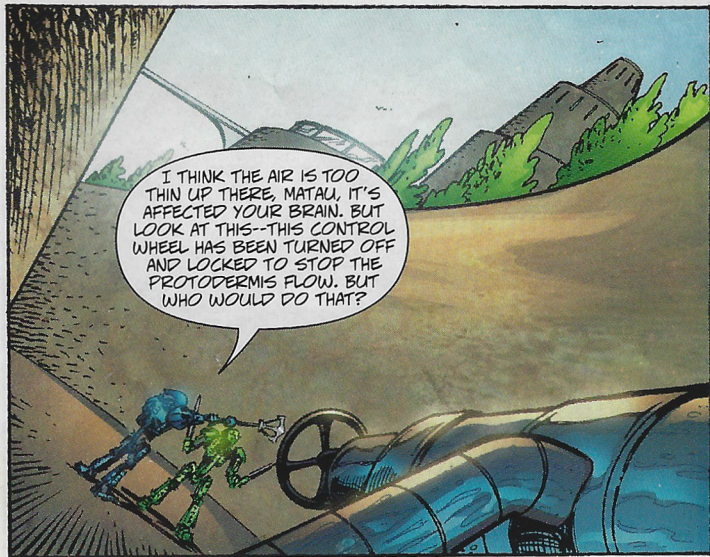
GREG FARSHTEY—WRITER **RANDY ELLIOTT—ARTIST**
PETE PANTAZIS—COLORIST **KEN LOPEZ—LETTERER**
JAYE GARDNER—EDITOR **TOBY PUTKIEWICZ—LAYOUT & DESIGN**



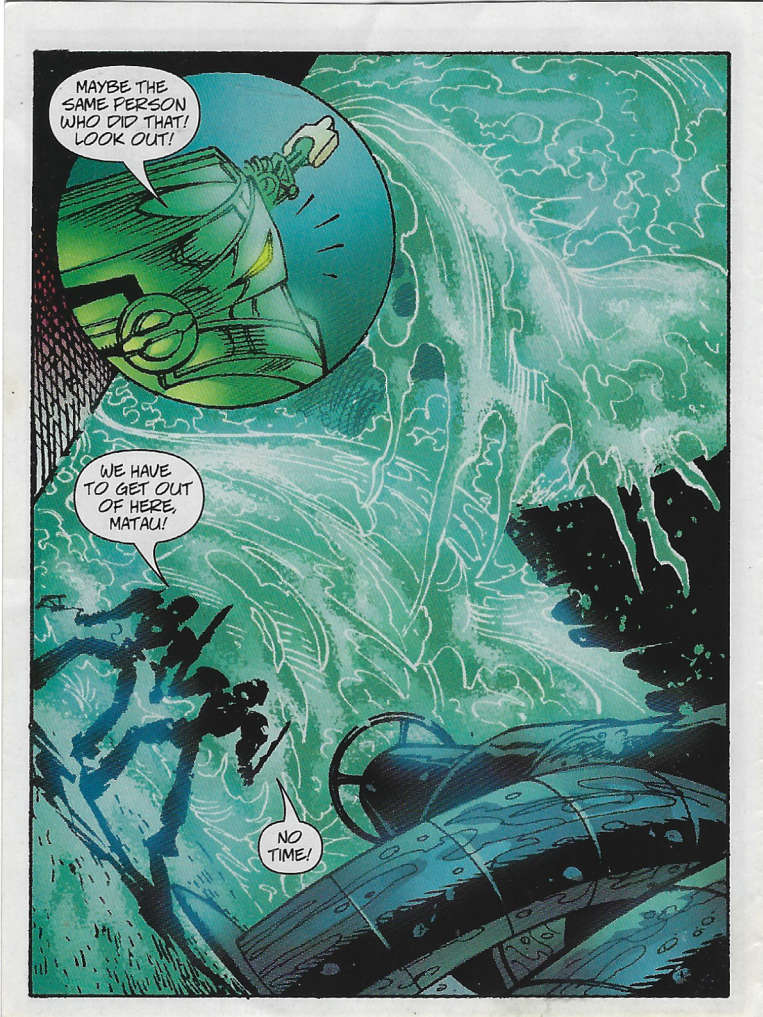
OF COURSE I KNOW--JUST LIKE YOU KNOW YOUR WAY AROUND THAT TANGLED MESS OF CHUTES AND CABLES IN LE-METRU.



HA! YOU HAVEN'T LIVED UNTIL YOU'VE WINDFLOWN THROUGH THE CHUTES, NOKAMA. MAYBE I SHOULD SHOW YOU SOMEDAY?



I THINK THE AIR IS TOO THIN UP THERE, MATAU, IT'S AFFECTED YOUR BRAIN. BUT LOOK AT THIS--THIS CONTROL WHEEL HAS BEEN TURNED OFF AND LOCKED TO STOP THE PROTODERMIS FLOW. BUT WHO WOULD DO THAT?



MAYBE THE
SAME PERSON
WHO DID THAT!
LOOK OUT!

WE HAVE
TO GET OUT
OF HERE,
MATAU!

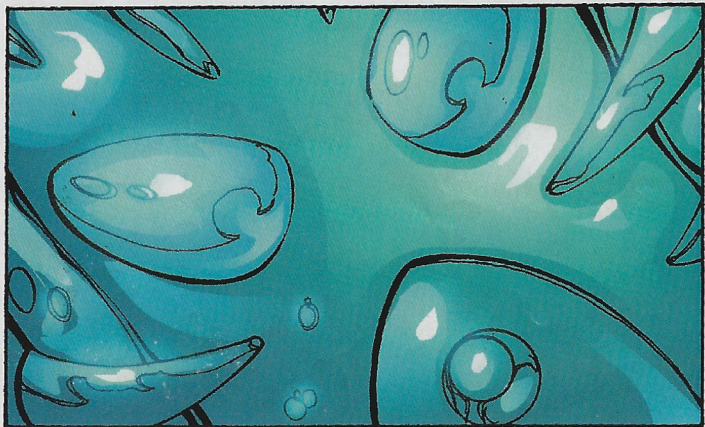
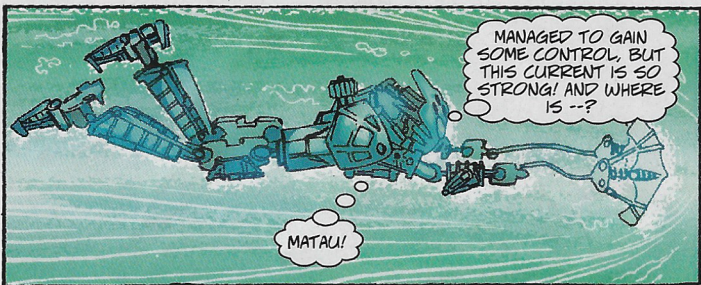
NO
TIME!

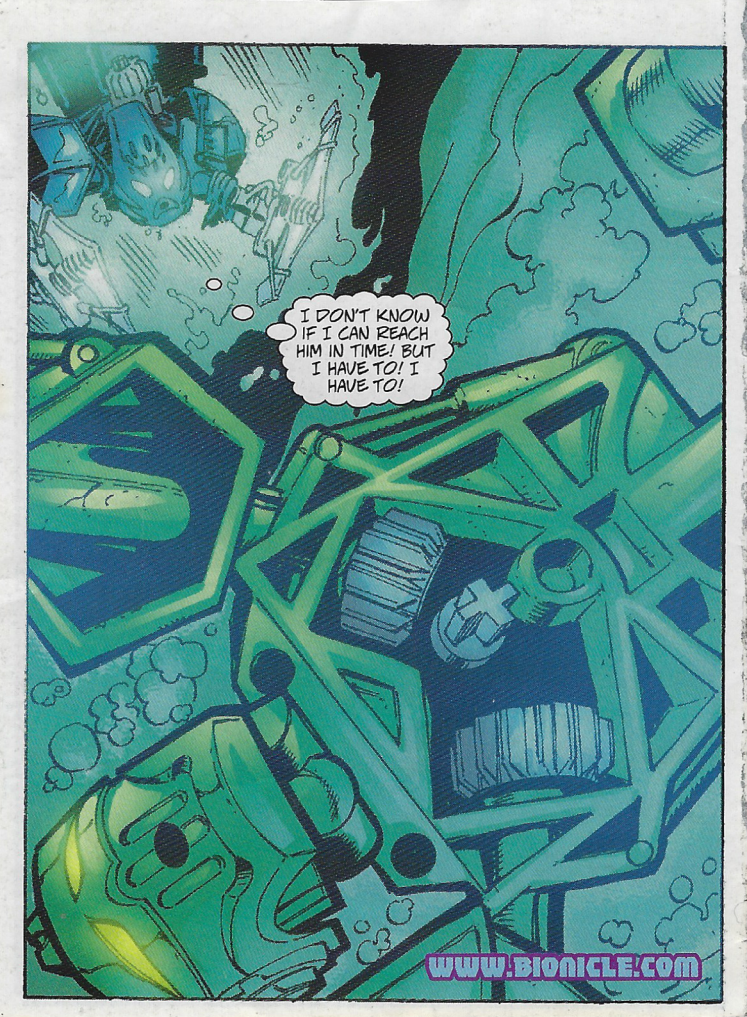
UNABLE TO RESIST
THE POWER OF THE
FLOODTIDE, THE TWO
TOA METRU ARE
SWEEPED AWAY!



MANAGED TO GAIN
SOME CONTROL, BUT
THIS CURRENT IS SO
STRONG! AND WHERE
IS --?

MATAU!





I DON'T KNOW
IF I CAN REACH
HIM IN TIME! BUT
I HAVE TO! I
HAVE TO!

BIONICLE™

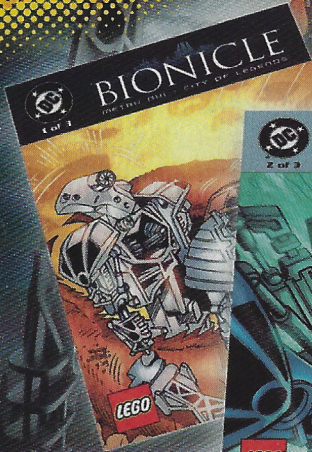


METRO-NUI

Enter the City - Reveal the Mystery

Oscar Mayer
Lunchables[®]
LUNCH COMBINATIONS

COLLECT
ALL 3 COMIC
BOOKS



Get the free
comic books inside
LUNCHABLES[®] Mega Packs



LUNCHABLES[®] is a registered trademark of KF Holdings Inc.
BIONICLE, LEGO and the LEGO logo are all copyright of The LEGO Group ©2003 The LEGO Group.

LEGO