

The Legend of Lewa

Part 2

The evil Makuta rules the island of Mata Nui. The residents have put their faith in a legend. One day six canisters appeared on the shores containing six mighty warriors. The legendary Toa have arrived. To defeat Makuta, the Toa must find the Great Masks of Power.

In last month's adventure, the legend of Lewa arrived. After finding a Mask of Power, Lewa was attacked by a huge flying beast, which snapped the vine he was holding...

BIONICLE



Kongu
Villager of Le-Koro

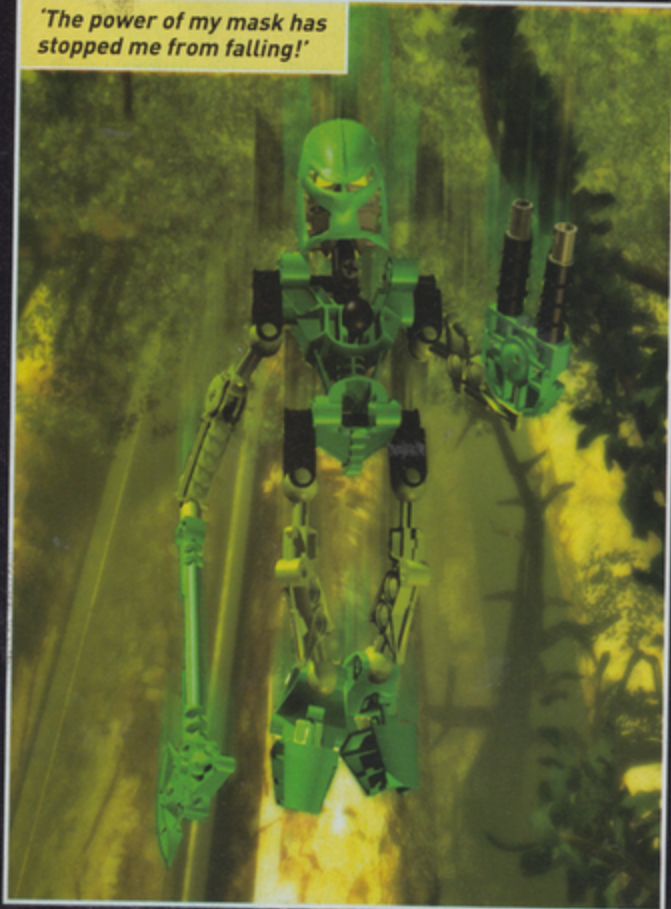


- Featuring -
Turaga Matau
Leader of Le-Koro



Lewa
The Toa of Air

'The power of my mask has stopped me from falling!'



Lewa's Mask of Levitation made him defy gravity!



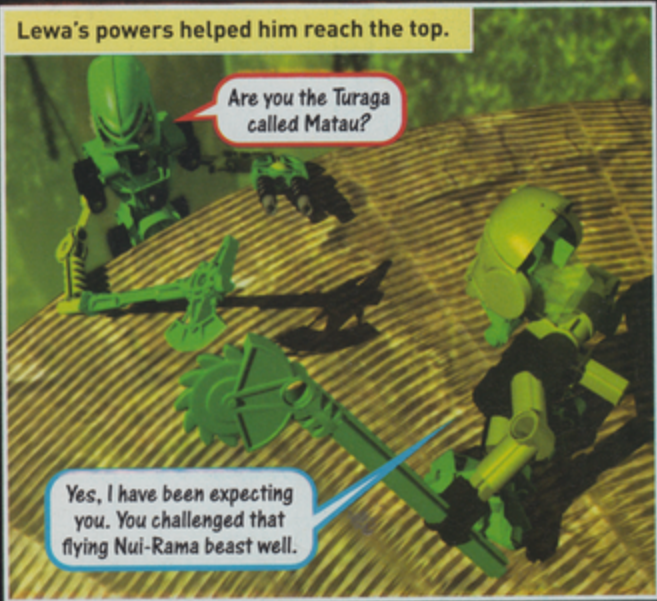
This evil creature must've been sent from Makuta... but it is no match for me! I rule the air around here!

Suddenly Lewa realised he had found the Great Tree of the forest...





'I remember what Kongu said - I must reach the top of the highest tree...'



Lewa's powers helped him reach the top.

Are you the Turaga called Matau?

Yes, I have been expecting you. You challenged that flying Nui-Rama beast well.



Welcome to Le-Koro, our Village of Air. Follow me Great Toa, there's a puzzle I need you to solve.



Hi Lewa! Nice moves with the Nui-Rama!

Thanks little friend.

I'm Tamaru, welcome. Has Matau told you about our puzzle?



Not yet Tamaru. Let's all go to the dead tree where secrets sleep within...

Lewa, Matau and the villagers arrived at the site of the dead tree.

We know the tree holds a deep, unsolved secret, but that is all.

You spoke of 'secrets within' - let's see what's inside!

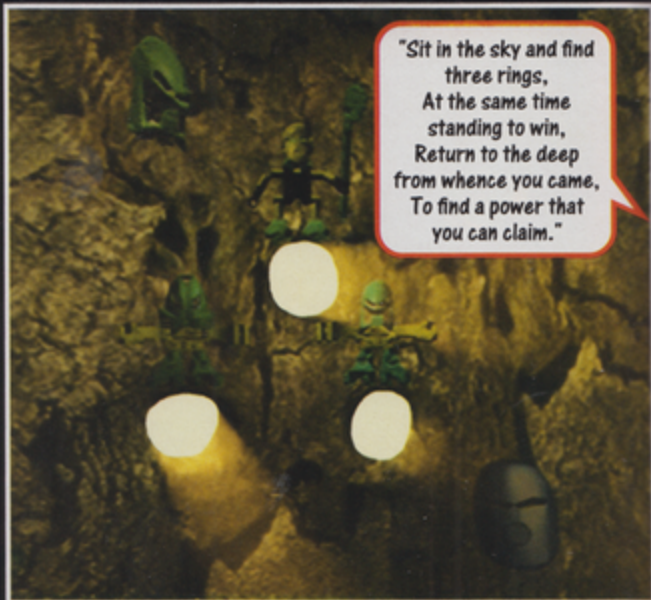
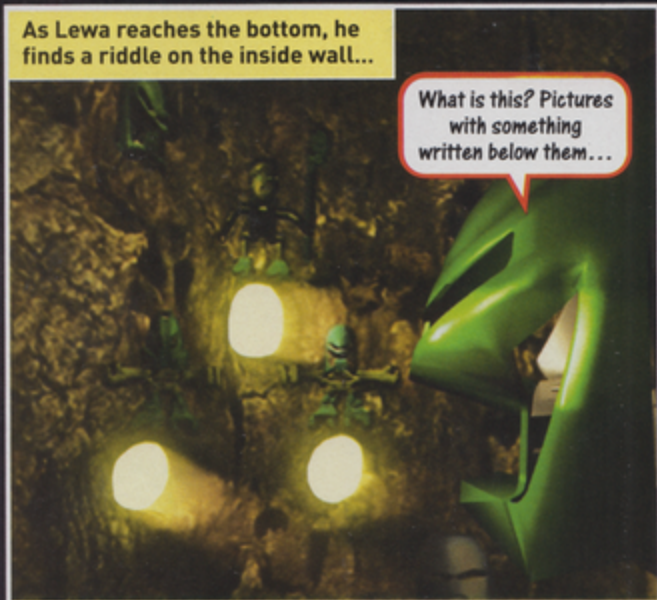


It's hollow! I'm going inside!

As Lewa reaches the bottom, he finds a riddle on the inside wall...

What is this? Pictures with something written below them...

"Sit in the sky and find three rings, At the same time standing to win, Return to the deep from whence you came, To find a power that you can claim."



It said, "sit in the sky" - what can I see from up here?

Three rings! I know what to do! Matau, Kongu, Tamaru - climb to the top of the forest!



That's it. Now step into the centres on 'three' - one...two...



...three!



Something has appeared inside the tree!



Back inside the tree, Lewa found another mask.



The Kanohi Rau! The Mask of Translation!

Stepping on those treetops unlocked the mask from the tree!

Lewa put on the mask, and it became a part of his being.



Excellent, young Toa. You must now go to where the water flows; your next challenge awaits you

Don't worry. I will restore peace to this island!

After a long search, Lewa finds a lagoon...



Panicking underwater, a strange shape zooms towards Lewa...

