

NOVEMBER 2009 \$2.95  
ISSUE FIVE  
WWW.BIONICLE.COM

GLATORIAN

# BIONICLE

FACTORY STORY • FOR POWER



MHAN ©  
1/09

FARSHTEY | MHAN



SOME BELIEVE THE WORLD OF BARA MAGNA TO BE ONLY A VAST, UNENDING DESERT. BUT THEY ARE WRONG.

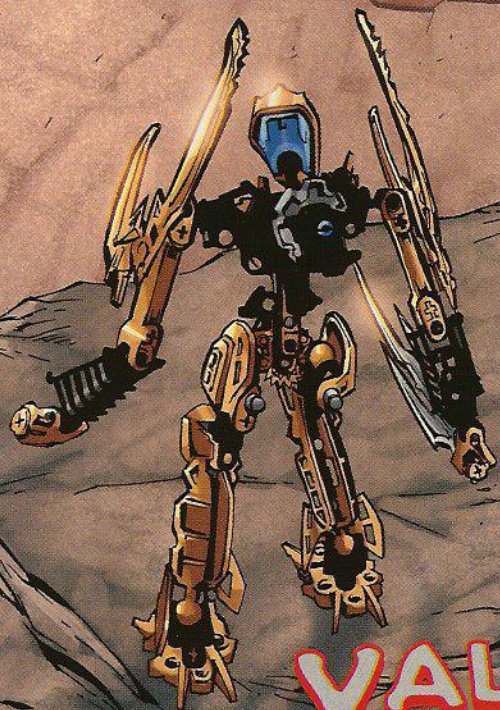
THE BLACK SPIKE MOUNTAINS LOOM OVER THE NORTHERN REGION OF THE PLANET, AND TODAY MATA NUI WALKS AMONG THE PEAKS.

HE'S COME IN SEARCH OF THE MEANING BEHIND THIS SYMBOL, FOUND BOTH ON THE SKRALL SHIELDS AND ON AN ANCIENT COIN FOUND BY BERIX IN THE SANCTUARY OF THE GREAT BEINGS.



NOW IT SEEMS HE'S FOUND THE ANSWER--BUT  
THE SOLUTION TO THIS PUZZLE IS ANOTHER  
PUZZLE, MYSTERY PILED UPON MYSTERY.

AT TIMES LIKE THIS, HE WONDERS IF THE GREAT  
BEINGS WERE TRULY BRILLIANT BEYOND  
IMAGINING, OR HOPELESSLY MAD. OR IF THERE'S  
EVEN ANY DIFFERENCE BETWEEN THE TWO...



# VALLEY OF FEAR

GREG FARSHTEY-WRITER POP MHAN-ARTIST  
ULISES ARREOLA-COLORIST SAL GIPRIANO-LETTERER  
TOBY DUTKIEWICZ-ART DIRECTOR/DESIGNER  
JESSICA NUMSUWANKIJKUL-ASST. EDITOR



THE BARA MAGNA  
DESERT.

OUT OF  
MY WAY,  
FOOLS!

NOT LIKELY,  
SAHMAD--

NOT UNLESS  
YOU'VE BECOME  
FIREPROOF.

I DON'T  
KNOW WHERE YOU  
GOT THOSE POWERS,  
ACKAR, BUT THEY  
WON'T HELP YOU...  
OR THE AGORI!







OH, SHUT UP, YOU LOSER.



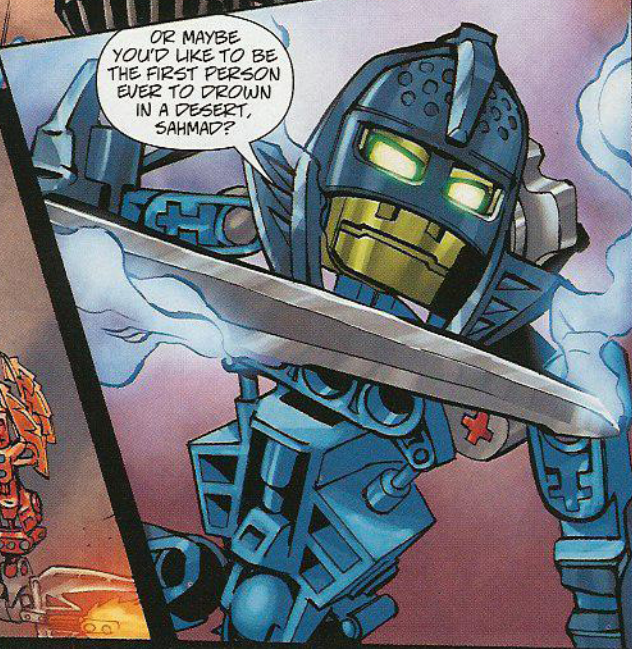
HERE, HAVE A DRINK ON ME.

AACKK!

SPLOOSH

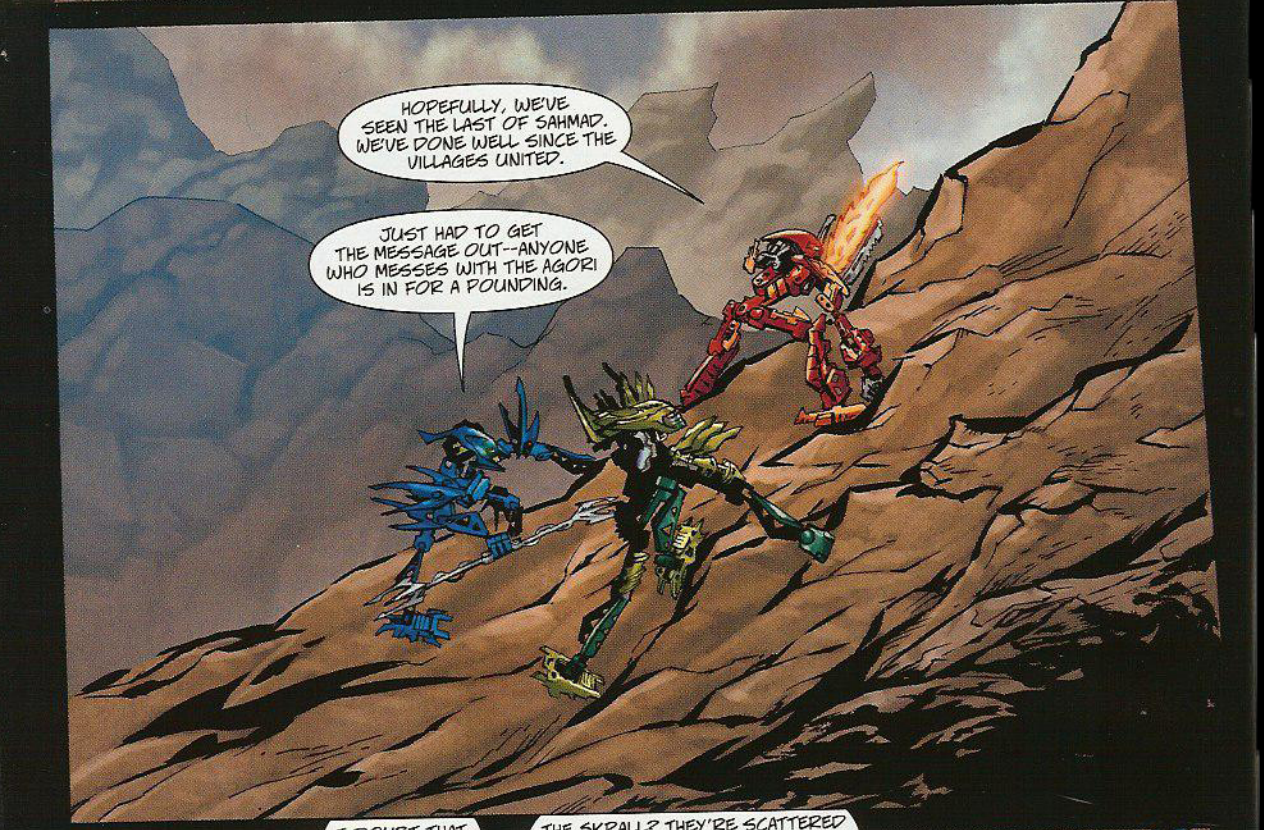


NOW LISTEN CAREFULLY, SLAVER. YOU'RE OUT OF BUSINESS, AS OF TODAY. IF YOU SO MUCH AS LOOK AT ONE OF OUR AGORI IN THE WRONG WAY, YOU'LL REGRET IT.




OR MAYBE YOU'D LIKE TO BE THE FIRST PERSON EVER TO DROWN IN A DESERT, SAHMAD?






HOPEFULLY, WE'VE  
SEEN THE LAST OF SAHMAD.  
WE'VE DONE WELL SINCE THE  
VILLAGES UNITED.

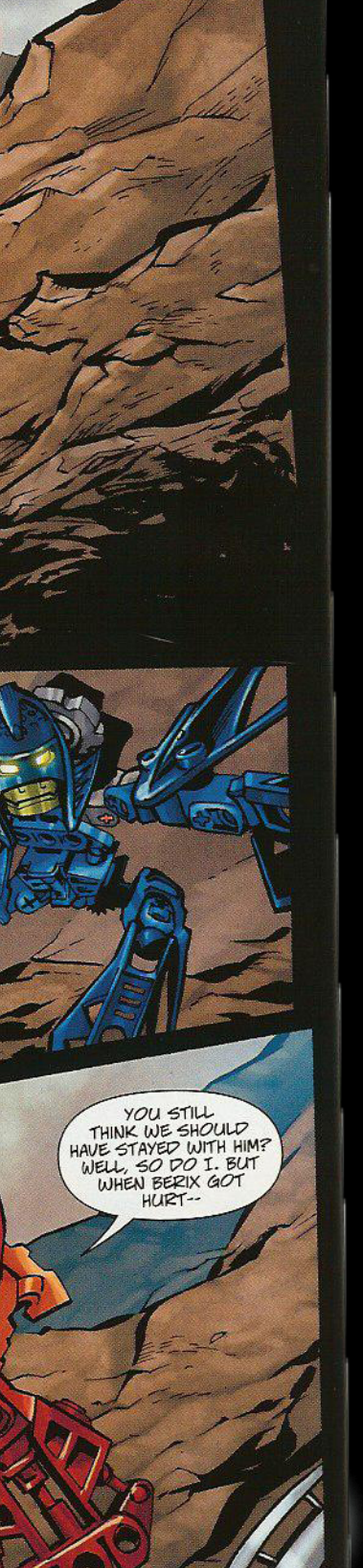
JUST HAD TO GET  
THE MESSAGE OUT--ANYONE  
WHO MESSES WITH THE AGORI  
IS IN FOR A POUNDING.



I DOUBT THAT  
WOULD SCARE  
THE SKRALL.




THE SKRALL? THEY'RE SCATTERED  
ALL OVER THE DESERT LIKE SAND  
FLEAS AFTER A STORM. IF THE  
BONE HUNTERS DON'T GET THEM,  
THE VOROX WILL. MY WORRY  
IS MATA NUI.



YOU STILL  
THINK WE SHOULD  
HAVE STAYED WITH HIM?  
WELL, SO DO I, BUT  
WHEN BERIX GOT  
HURT--





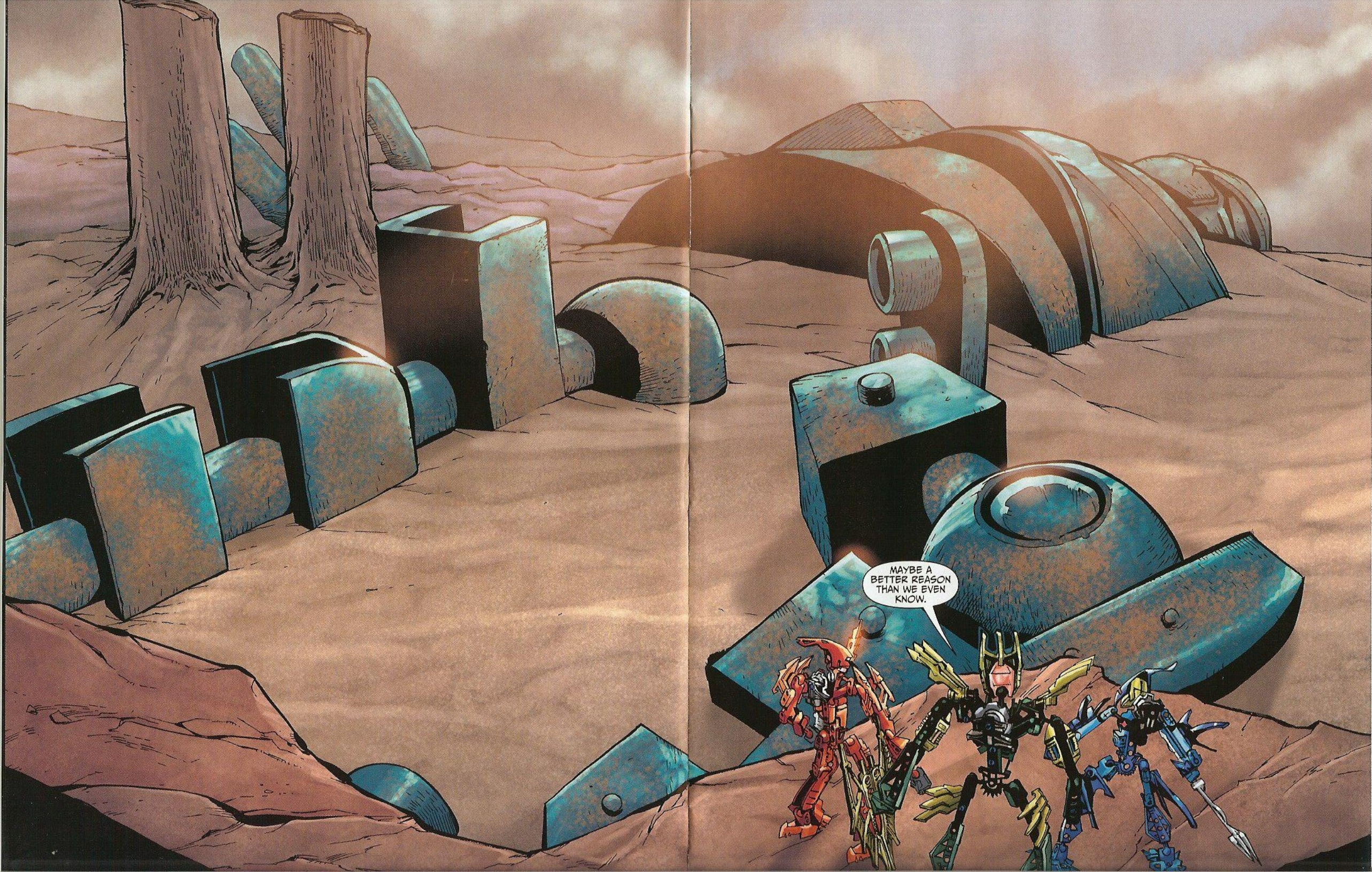
"I KNOW," SAYS KIINA.  
"AFTER WE RAN INTO THOSE  
SKRALL STRAGGLERS IN THE  
MOUNTAINS AND BERIX GOT  
THORNAXED, MATA NUI  
THOUGHT IT WAS BETTER  
IF HE WENT ON ALONE."

ARE YOU SURE  
YOU DIDN'T WANT TO  
GO WITH HIM JUST TO  
MAKE SURE HE DIDN'T GO  
BACK ON HIS WORD AND  
LEAVE THE PLANET  
WITHOUT YOU?

WELL...  
MAYBE A LITTLE.  
BUT HE'S A FRIEND,  
TOO, AND I WORRY  
ABOUT HIM. HE  
SHOULD BE BACK  
BY NOW.

DON'T WORRY.  
HE'LL RETURN.  
HE HAS A GOOD  
REASON.





MAYBE A  
BETTER REASON  
THAN WE EVEN  
KNOW.

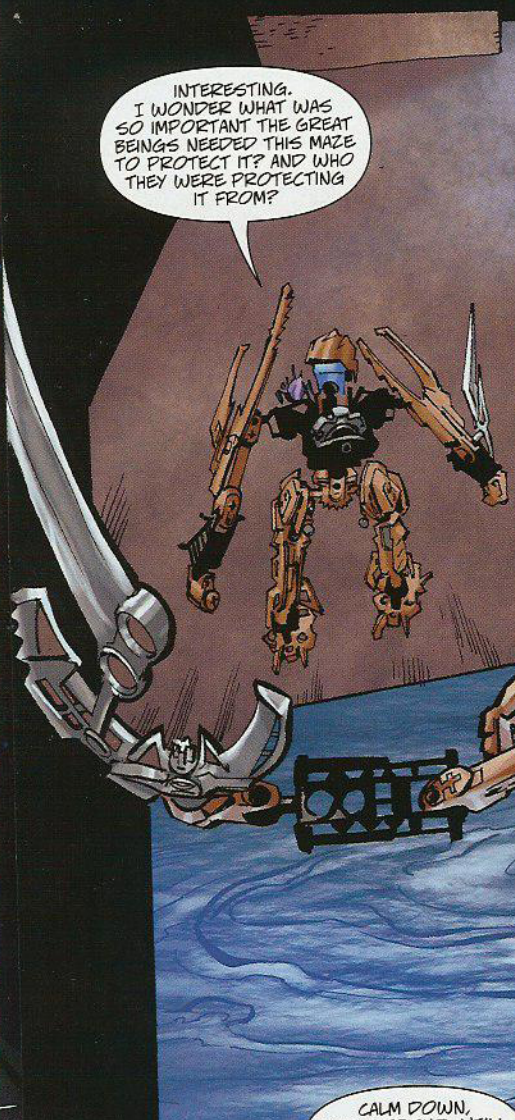


# SOME THINGS COMING...


JANUARY 2010 








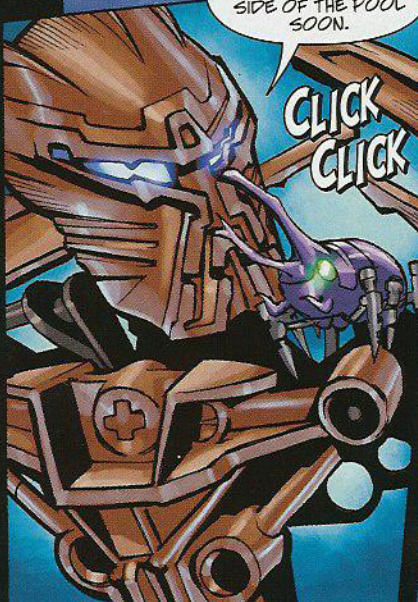
INTERESTING.  
I WONDER WHAT WAS  
SO IMPORTANT THE GREAT  
BEINGS NEEDED THIS MAZE  
TO PROTECT IT? AND WHO  
THEY WERE PROTECTING  
IT FROM?



A TRAP? ALMOST  
CERTAINLY. BUT OUR  
ONLY CHOICE IS TO  
GO THROUGH IT  
OR TURN BACK.



COLD.  
MAYBE THE GREAT  
BEINGS MEANT  
FOR INTRUDERS  
TO FREEZE TO  
DEATH.



CALM DOWN,  
LITTLE FRIEND. WE'LL  
MAKE IT TO THE OTHER  
SIDE OF THE POOL  
SOON.

CLICK  
CLICK

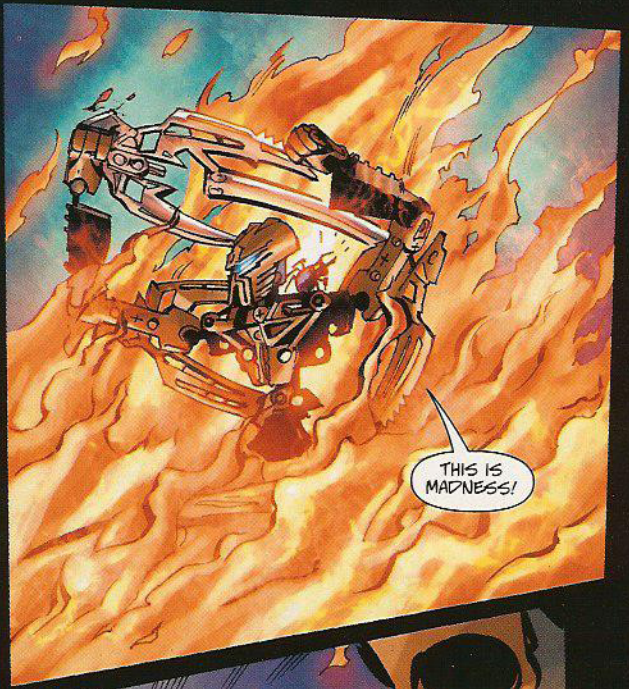


ICE?!

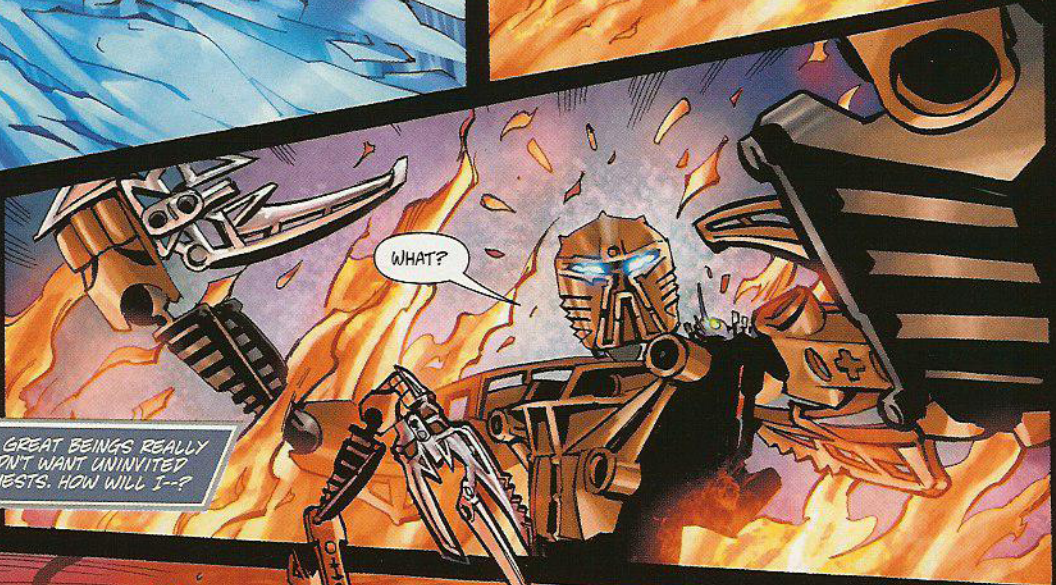




ONCE, THIS MIGHT HAVE BEEN A PROBLEM, BUT MY SWORD CAN EASILY BREAK ME FREE.

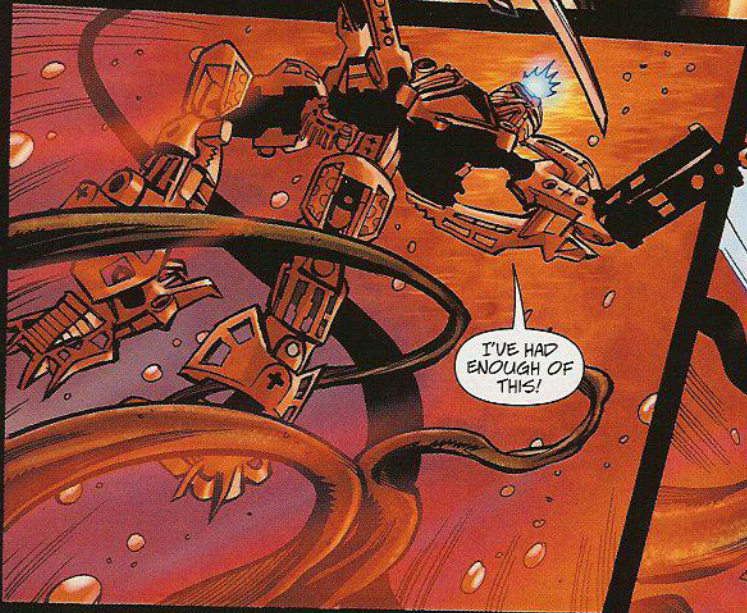


THIS IS MADNESS!



WHAT?

THE GREAT BEINGS REALLY DIDN'T WANT UNINVITED GUESTS. HOW WILL I--?



I'VE HAD ENOUGH OF THIS!



I WILL BE FREE!



KA-KA-MM

FREE!

NOT JUST  
A MYSTERY,  
THEN, CLICK...  
A DEATHTRAP.  
BUT WE KEEP  
MOVING.

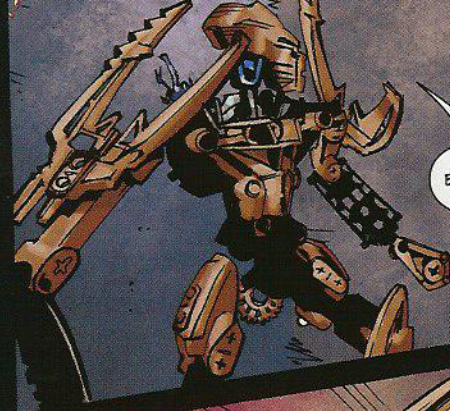
IS IT HOURS  
OR DAYS THAT I'VE  
BEEN MAKING MY WAY  
THROUGH THIS MAZE?  
I CAN NO LONGER  
TELL.

DEAD END.  
I MUST HAVE MADE  
A WRONG TURN  
SOMEWHERE.

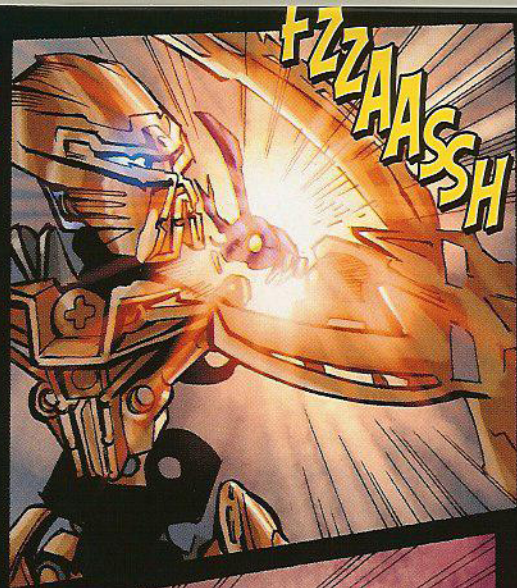
UH-OH ...



ZUM BULLE



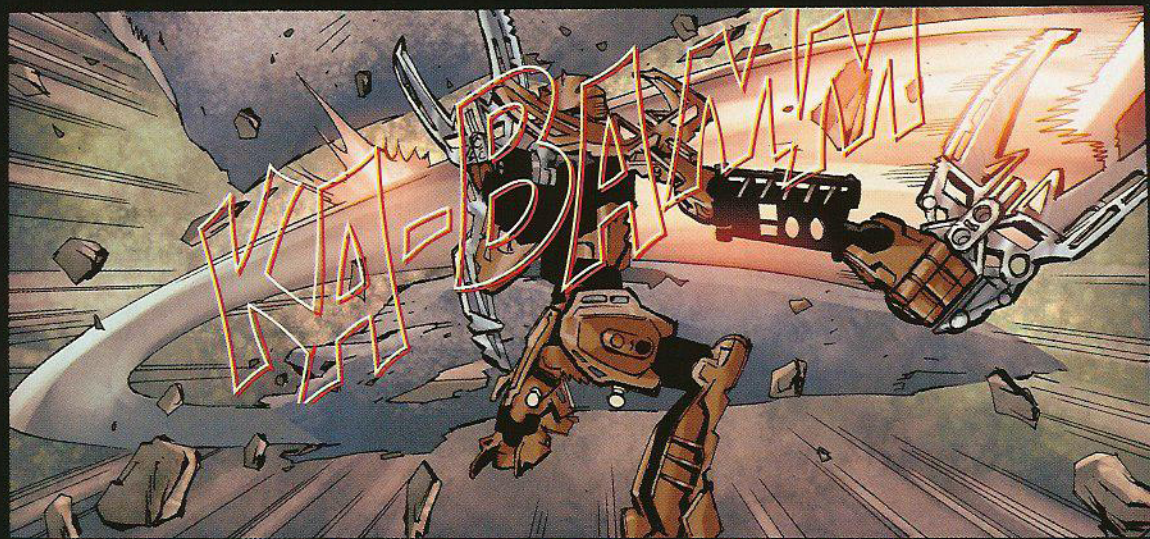
"DEAD"  
END, INDEED...  
CLICK?



FZZ  
AASH



HERE  
WE GO!



WAA  
DAA



THORNAX  
LAUNCHERS!

I'M SAFE BEHIND  
MY SHIELD... BUT  
"SAFE" WON'T GET  
ME WHERE I NEED  
TO GO.

**KA-WHAM**  
**KA-WHAM**

MAYBE THIS  
WILL.

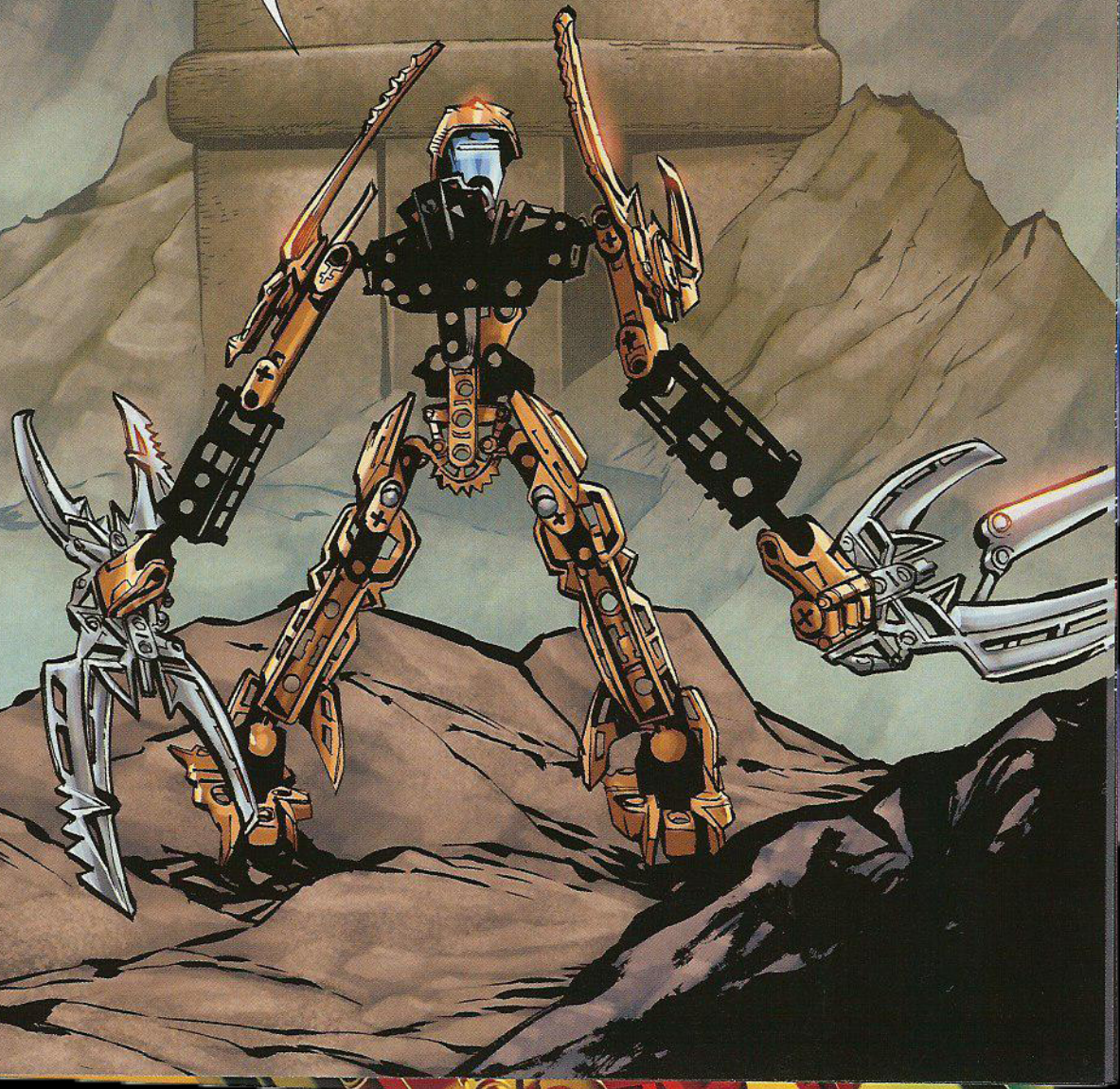
**KRRUNNCH**

DO YOUR  
WORST, MAZE.  
I WILL MAKE IT  
THROUGH. MY  
UNIVERSE AND  
MY PEOPLE  
DEPEND ON  
ME.



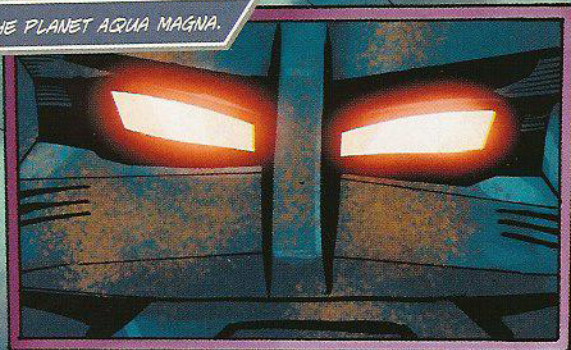
I'VE MADE IT--  
THE HEART OF THE  
MAZE. LOCKED INSIDE  
THAT FORTRESS ARE THE  
ANSWERS I SEEK, I KNOW  
IT. I JUST WISH I KNEW  
HOW TO GET IN THERE  
AND FIND THEM.

THE GREAT BEINGS, IT  
SEEMS, NEVER MAKE THINGS  
EASY. AND I HAVEN'T TIME  
TO WASTE--FOR WHO KNOWS  
WHAT MY ANCIENT ENEMY,  
MAKUTA, MIGHT BE PLANNING  
EVEN NOW?





THE PLANET AQUA MAGNA.



MONTHS HAVE GONE BY SINCE THE EVIL MAKUTA SEIZED CONTROL OF MATA NUI'S MASSIVE ROBOT BODY AND THE UNIVERSE OF LIVING BEINGS WITHIN IT. SINCE THEN, HE HAS CRASHED REBELLIONS BY TOA AND MATORAN WHILE LEARNING TO USE HIS NEW POWER.

NOW, AT LAST, HE IS READY.

"A THOUSAND WORLDS ARE MINE TO CONQUER AND RULE," THINKS MAKUTA. "AND I KNOW JUST WHERE TO BEGIN..."

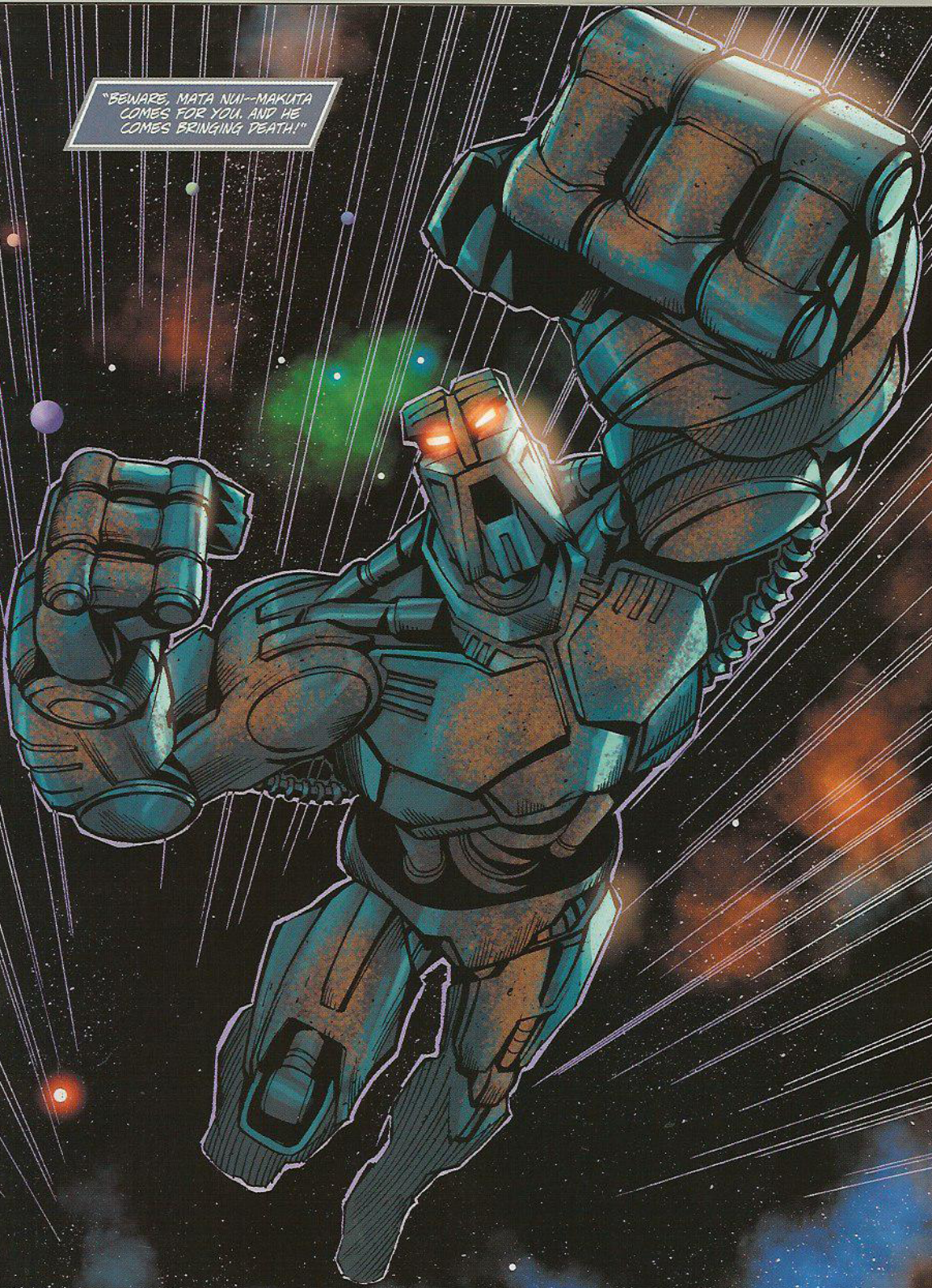
"DESPITE HIS DEFEAT AND EXILE, MATA NUI STILL LIVES... I CAN SENSE IT. HE REFUSES TO BE BROKEN. BUT HE MUST BE, IF I AM TO ACHIEVE MY DESTINY.

"HE WAITS ON BARA MAGNA. BUT HE NEED WAIT NO LONGER.





"BEWARE, MATA NUI--MAKUTA  
COMES FOR YOU, AND HE  
COMES BRINGING DEATH!"



**NEXT: THE BATTLE YOU DE  
MATA NUI VS. [REDACTED]**