

July-August 2001



MANIATM Magazine

BE THE LEGO CLUB • TR

Awesome
BIONICLETM
Building
Ideas
See pages 10-11

NEW JACK STONE

Can Do... Will Do... Done!



WOW!
WHAT A GUY!
HE'S MY HERO!

HEY LOOK!
JACK STONE CAPTURED
THOSE ESCAPED
JAIL BIRDS AND
ALREADY HAS THEM
BACK IN JAIL!

MAGICAL
SNEAK
PREVIEW!
SEE PAGE 18



Secrets
behind the
Special
Effects

See pages 4-5

new
Possibilities

JACK STONE™ SAVES THE DAY!

Can Do... Will Do... Done! When you hear those words, you know Jack Stone is coming to the rescue! Jack always knows when there's danger -- and always knows just what to do! He's brave & super smart, and he can build and rebuild his way out of danger!

See Jack in action at www.LEGO.com/jackstone



I'LL HAVE THIS FIRE OUT IN NO TIME!

FLICKERING FIREBALLS! JACK'S THE BEST!

HEY, HE ROBBED THE BANK AND HE'S SPEEDING TOO!

4609 Fire Attack Team



Jack Stone started his day by helping the Fire Attack Team put out a blaze downtown! What a guy!



JUST IN TIME TO STOP THIS RUNAWAY RAFT!

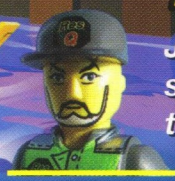
GALLOPING GUPPIES! GOOD THING JACK STONE WAS HERE!

CAN DO... WILL DO... DONE!



4610 Res-Q Super Station

Jack used the Res-Q boat to save some swimmers - then he caught up to our life raft before it got away!



4604 Police Copter



Tell Us Your Favorite Jack Stone Adventure

Your story could appear in a future issue of LEGO® Mania Magazine!
How would you save the day if you were Jack Stone? Write a short story (no more than 150 words please) using Jack's vehicles and equipment!

Send your story by August 30, 2001 to:
Jack Stone Adventure
LEGO Mania Magazine
P.O. Box 1625
Enfield, CT 06083-1625

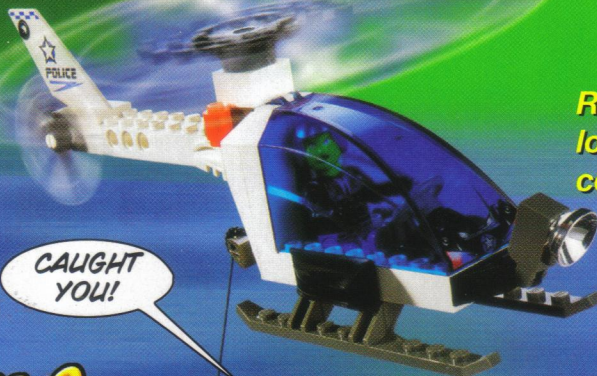
4608 Bank Breakout

Jack stopped a bank robbery before lunch using one of his special creations!



CAN DO... WILL DO... DONE!

I'LL STOP HIM!

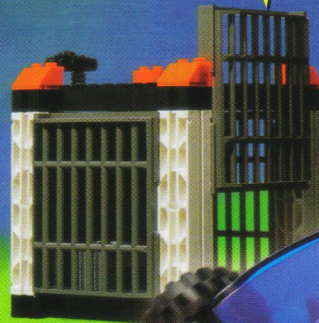


Raise and lower the cell doors!

CAUGHT YOU!

4606 Aqua Res-Q Transport

RATS!
IT'S JACK STONE



THUNDER AND STEERHEADS!
A JAIL BREAK!

4611 Police HQ



Jack helped us stop a jailbreak by dropping from a helicopter! Just a typical day for Jack Stone!

Lights flash and sirens wail on the police car!



Bringing

DINOSAURS

to Life!



Attack of the Spinosaurus

The chartered airplane crashes and is attacked by a Spinosaurus. Bigger and meaner than a T-Rex!



Raptors

Smarter than dolphins, whales or primates. What are they capable of?

When the dinosaurs in Jurassic Park III make you jump out of your seat, you can thank the special effects wizards at Stan Winston Studios and Industrial Light & Magic (ILM)!

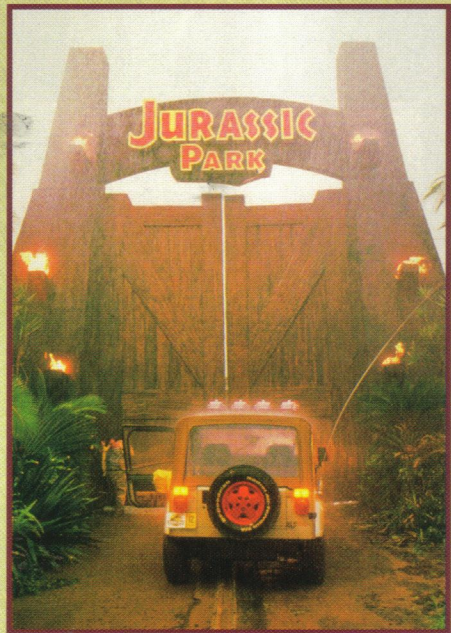
Stan Winston Studios designed and built the animatronic dinosaurs you see in the movie. Animatronics are motorized puppets controlled by electronics. They're often used for close-up shots, especially ones where the actors have to actually touch the dinosaurs (or get eaten by them!). When the Spinosaurus sticks his head into the wrecked airplane in Jurassic Park III, that's an animatronic dinosaur.

Working with animatronics can be tricky. Water can damage them, so you have to make sure the mechanical parts stay dry. Plus these dinosaurs are real giants - the Spinosaurus animatronic weighs 24,000 pounds! Special care has to be taken so that all the actors can work with them safely.

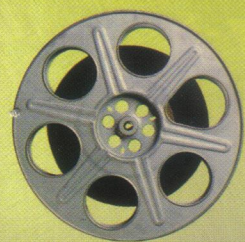
CGI effects are done on computer and added after the movie has been shot (CGI stands for

computer generated imagery"). These are produced by ILM, and are used for scenes where the dinosaurs have to do a lot of action. Pteranodons flying, herds of dinosaurs running - those effects all come from the ILM CGI specialists and their computers.

When you go see Jurassic Park III, see if you can guess which scenes use CGI and which feature real animatronic dinosaurs!



Much has changed since visitors passed through these gates in the first Jurassic Park film.



DIRECTOR'S CORNER

Animatronics or CGI? How do moviemakers decide when to use an animatronic creature and when to use a CGI effect?

The special effects people talk with the director and go through the storyboards (like the "Dino Cop" storyboards featured last issue). They look at each scene and decide which kind of effect they think will work best!

Raptors from LEGO Studios #1370 Raptor Rumble Studio

LEGO Studios - #1371 Spinosaurus Attack Studio



Adventures in LEGO World

JACK STONE TO THE RESCUE!

UH-OH.
SOMEONE'S IN TROUBLE,
AND THE RESCUE SQUAD
IS ON THE OTHER SIDE
OF TOWN!

HI, MY NAME IS JACK STONE.
I LIVE IN A TOWN JUST LIKE YOURS.
WHEN THERE'S TROUBLE, POLICE, FIRE AND
RESCUE PEOPLE ARE THERE TO HELP.

I
HOPE THOSE SHARKS
HAVE ALREADY HAD LUNCH
TODAY!

I HELP OUT TOO -
BECAUSE SAVING PEOPLE IS
WHAT I DO BEST!

I
WISH JACK STONE
WAS HERE. WHAT DOES
HE ALWAYS SAY?
"CAN DO... WILL DO..."

HE
ALWAYS SHOWS
UP IN THE NICK
OF TIME!

MY BOAT WAS TOO BIG
TO MAKE IT THROUGH THE
ROCKS. I HAD TO THINK FAST,
AND BUILD FASTER!

HURRY,
JACK! THE RAFT
IS SINKING!

THAT'S BECAUSE THERE'S
NEVER A MINUTE TO WASTE!

THIS SHOULD DO IT! BUT DID I BUILD IT IN TIME?



YIKES! HOPE HE LIKES THE TASTE OF LIFE RAFT!



CAN DO, WILL DO, DONE! NOW IT WAS TIME TO HEAD BACK TO SHORE!



THAT WAS CLOSE! BUT - HEY, LOOK OVER THERE!

I SEE IT! LOOKS LIKE THEY NEED HELP!



THAT'S A BIG FIRE! I BETTER GIVE THE FIRE ATTACK TEAM A HAND!



WE'RE ALMOST OUT OF WATER. HOW WILL WE GET MORE?

THERE'S NO TIME! WE NEED LOTS OF WATER, AND FAST!



HOW WILL YOU HELP FIGHT THE FIRE?

WHERE THERE IS A PROBLEM - THERE IS ALWAYS A SOLUTION.



THERE WAS NO TIME TO TELL THE FIRE TEAM MY PLAN! I NEEDED SPEED, SPEED, AND MORE SPEED!

WOW, IT'S JACK STONE! BUT WHAT CAN HE DO?



CAN DO, WILL DO, DONE!



GREAT! YOU PUT OUT THE FIRE!

AND NOW I DON'T HAVE TO TAKE A BATH TONIGHT!



THE TOWN WAS SAFE AGAIN! BUT THERE'S ALWAYS A NEW ADVENTURE AHEAD...

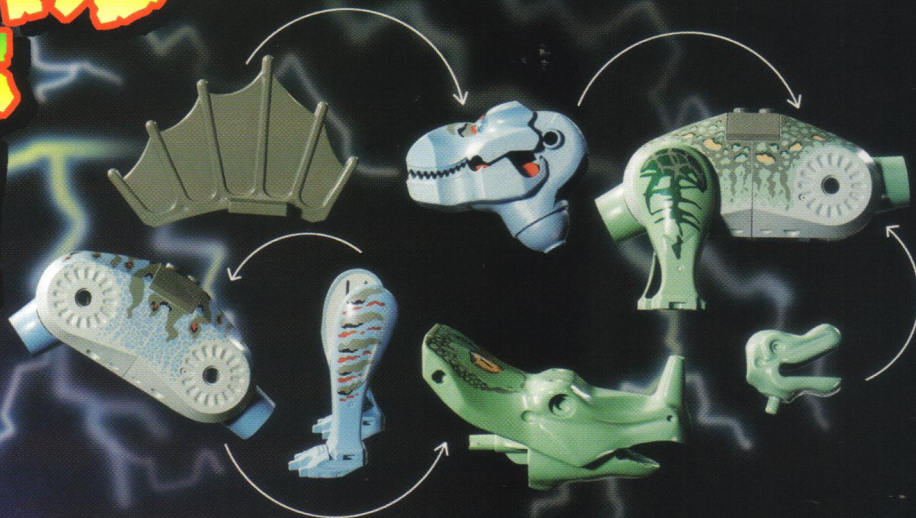
JACK, HELP! THE BANK'S BEING ROBBED!

... WHEN YOU'RE JACK STONE!

YOU'VE NEVER SEEN DINOSAURS LIKE THIS BEFORE!

CREATE YOUR OWN AND SEE HOW THEY SURVIVE IN THE PREHISTORIC WORLD!!

COMBINING DIFFERENT DINOSAUR MODELS LETS YOU CREATE WILD NEW PREHISTORIC BEASTS! YOU CAN BUILD ANY OF THESE OR CREATE WHOLE NEW DINOSAURS OF YOUR OWN!



1. GATHER DINOSAUR PIECES.
2. MIX AND MATCH PIECES AT WILL.
3. UNLEASH YOUR CREATIONS!

LEGO

DINOSAURS



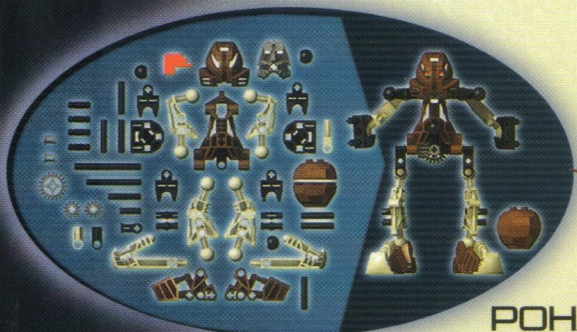
COOL NEW "DINO DIG" GAME AT www.LEGO.com/dinosaurs

Build the Ultimate Toa!

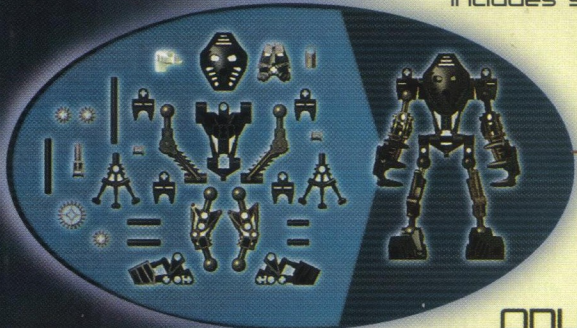
BIONICLE™

Toa Kaita Akamai

TO DEFEAT MAKUTA, THE SIX TOA MUST COMBINE THEIR POWERS AND MERGE TO FORM TWO GREAT BEINGS CALLED TOA KAITA. AKAMAI, PICTURED ON THIS PAGE, IS A MIGHTY WARRIOR AND IS FORMED BY COMBINING ELEMENTS OF ONUA, POHATU, AND TAHU. YOU'LL FIND STEPS TO BUILD AKAMAI IN THE BUILDING INSTRUCTIONS BOOKLET FOR ONUA, POHATU AND TAHU.



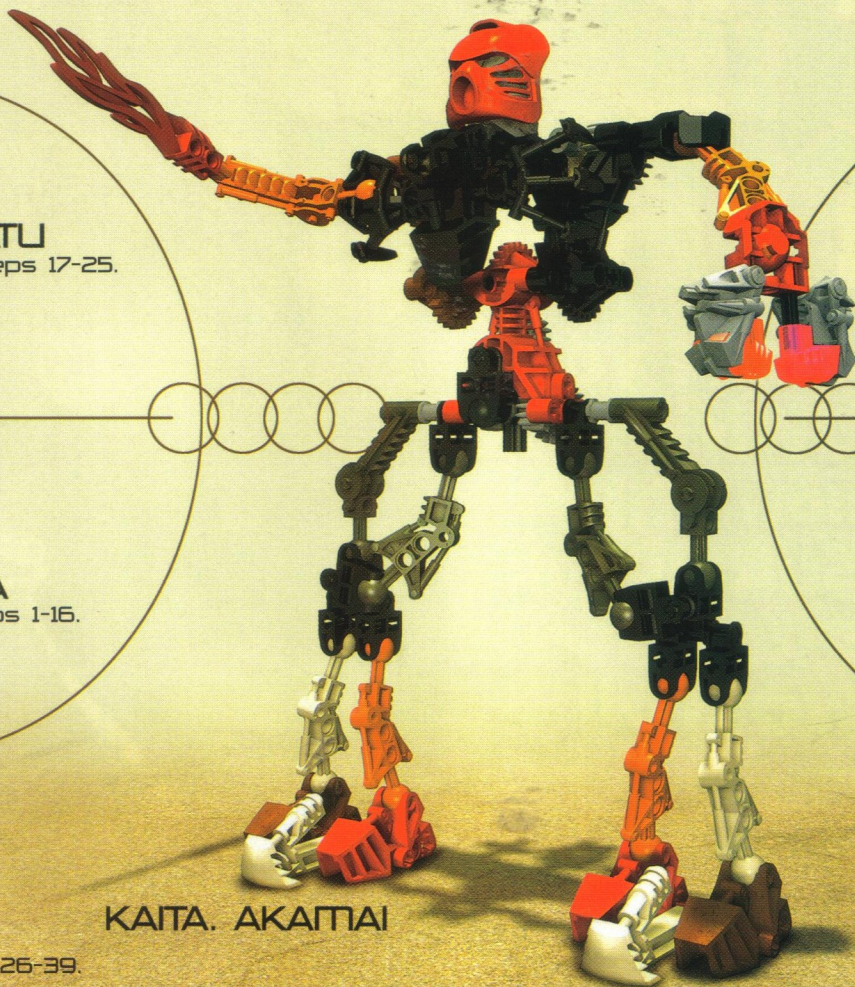
POHATU
includes steps 17-25.



ONUA
includes steps 1-16.



TAHU
includes steps 26-39.



KAITA. AKAMAI

YOU CAN ALSO COMBINE KOPAKA, GALI, AND LEWA TO FORM THE SECOND TOA KAITA, WAIRUHA.



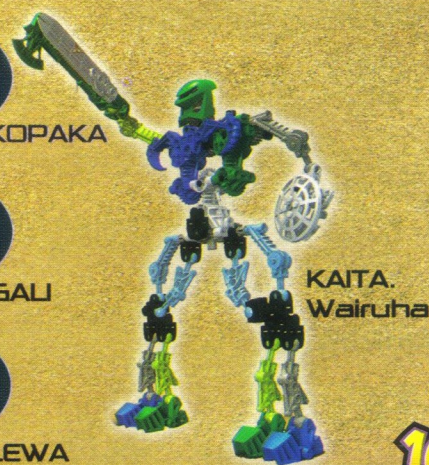
KOPAKA



GALI



LEWA



KAITA. Wairuha

Find The Power Event

Only at
WAL★MART
August 18, 2001

Help the Toa "Find the Power" and receive...
• **WAL★MART Exclusive**
Comic Art Poster by



• **Collectible BIONICLE Toa Mask**

Offer good at **WAL★MART** while supplies last.

YOU CAN BUILD THIS..

Your original model could be featured in LEGO® Mania™ Magazine. Send a photo of your model to:

LEGO® CLUB
"YOU CAN BUILD THIS..."
P.O. BOX 1308
ENFIELD, CT 06083-1308

Club members featured will receive a free LEGO set of their choice (up to \$100 value).

FIKOU tree spider

The Fikou is a dangerous tree spider found in the jungles of Mata Nui. It is most often seen in the vicinity of Le-Koro, and the natives of Lewa's realm must always be on guard when swinging through the trees.

Fikou love to lurk among the high branches and wait for their incredibly strong webs to entangle prey.

step 1



step 2



step 3



step 4



See the Fikou and other creatures from Mata Nui in the BIONICLE™ Game Boy Advance game coming this Fall!

To make your own Fikou tree spider use pieces from #8532 Onua and #8531 Pohatu or create your own creature!

final step



POHATU

ONUUA

BIONICLE™

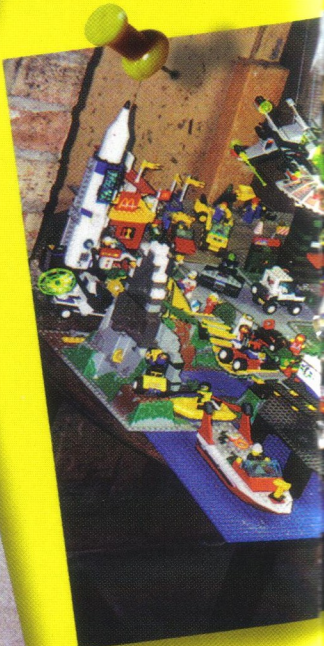
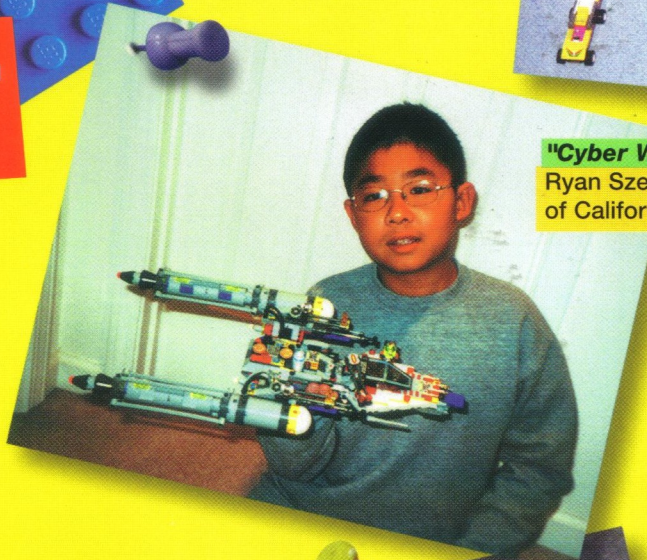
COOL CREATIONS

Send a photo of your model to:
Cool Creations
LEGO® Club
P.O. Box 1308
Enfield, CT 06083-1308

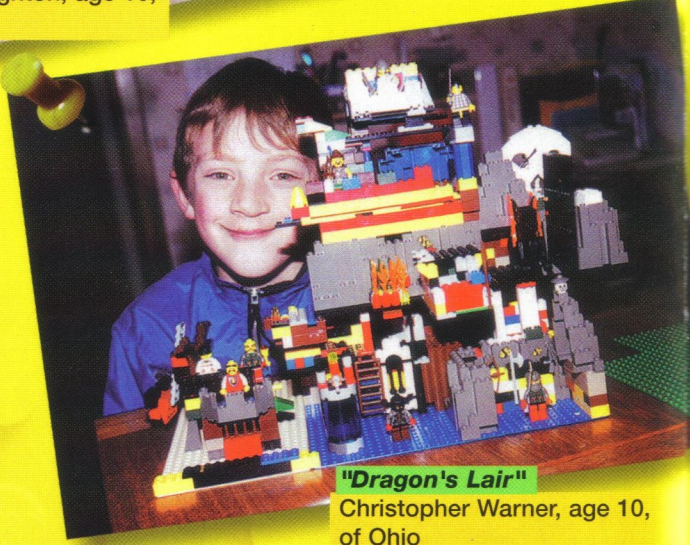
Remember to include your name, address, age and model name. Pictures will not be returned, so take an extra photo for yourself!



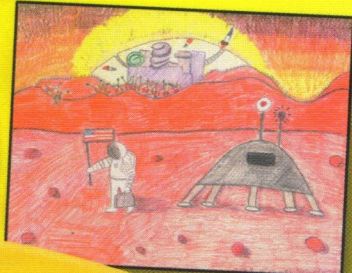
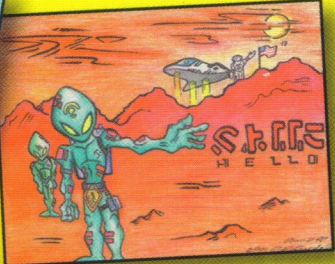
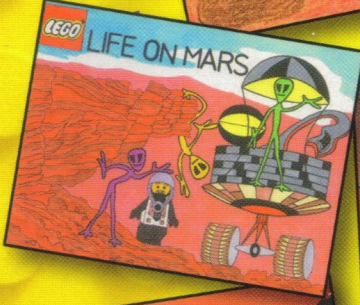
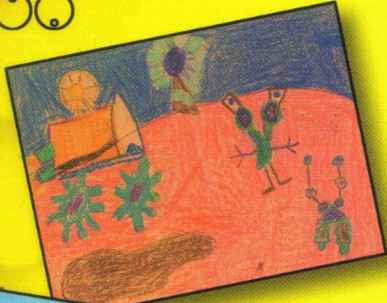
"Cyber Wing"
 Ryan Sze, age 9,
 of California



"Iron Eater"
 Peter Broughton, age 10,
 of Virginia



"Dragon's Lair"
 Christopher Warner, age 10,
 of Ohio

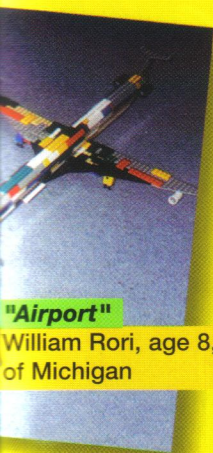


LIFE ON MARS

Creative Coloring Challenge Winners

- Eric Bundy, 14, Pennsylvania
- David Delagardelle, 12, Indiana
- Aaron Yamagata, 10, California
- Michael DiGiovanni, 8, Florida
- Jason Gabel, 6, New York

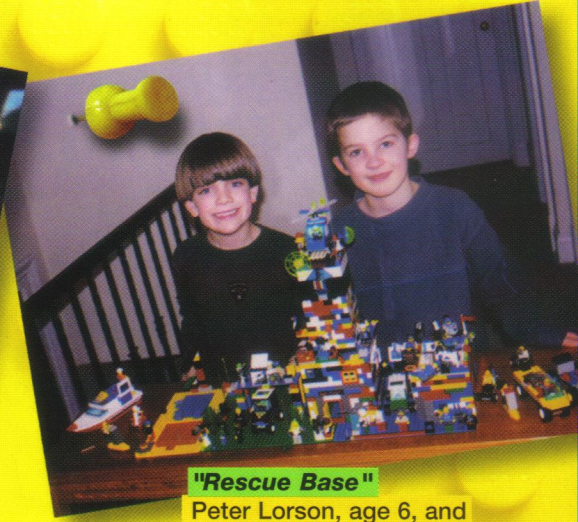
For other Coloring Creations, visit www.LEGO.com/mars



"Airport"
William Rori, age 8,
of Michigan



"Space Station One"
Thomas Hoster, age 6,
of Illinois



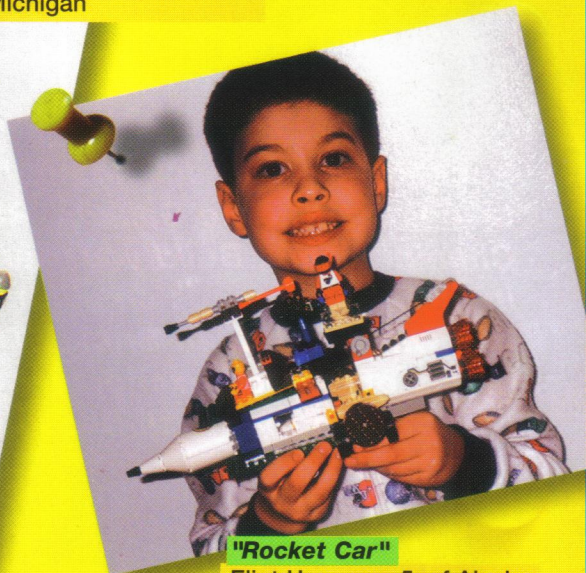
"Rescue Base"
Peter Lorson, age 6, and
Colum Barbato, age 6,
of Illinois



"LEGO Town"
Nathan Connon, age 14,
and Paul Connon, age 12,
of Illinois



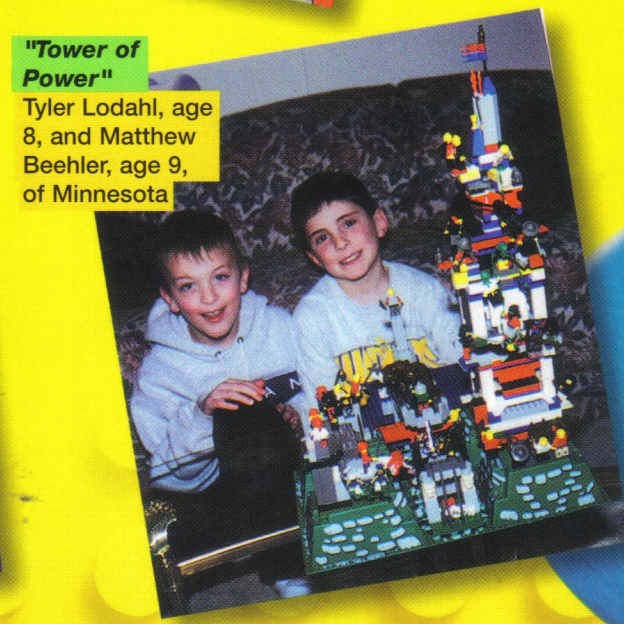
"Flight of the Night"
Kurt Kurzenhauser, age 12,
of Michigan



"Rocket Car"
Eliot Herz, age 5, of Alaska



"Fun House"
Amber Poteet, ages 5,
of Colorado



"Tower of Power"
Tyler Lodahl, age 8,
and Matthew Beehler, age 9,
of Minnesota



Go to
www.LEGO.com/build
to see more
creations by other
kids just like you in
the
website gallery!

COMING THIS FALL *Start Your Engines!*

LEGO RACERS 2



Rocket Racer is back and he's ready to take you on in the Galactic Racing Championship! Build your car, compete in high-speed races on alien worlds, and win the Golden Bricks. There's plenty of danger, excitement and fun on your way to the finish line in LEGO Racers 2!

Build!



Design and build your own car, then watch it go! If you need to make repairs during the race, stop in the pit for more bricks.

Race!



Challenge other Racers on 24 new tracks on four different worlds! Drive in rain and snow on your way to victory!

Win!



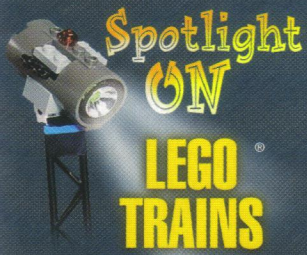
Cross the finish line first and you win the Golden Brick, plus unlock exciting new bonus levels!

Get a sneak preview of the upcoming Bionicle PC CD-ROM game at www.bionicle.com

All screenshots taken from PC CD-ROM version of the game



PlayStation and the PlayStation logo are registered trademarks of Sony Computer Entertainment, Inc. NINTENDO AND GAME BOY, GAME BOY ADVANCE ARE TRADEMARKS OF NINTENDO OF AMERICA, INC. © 1996 NINTENDO OF AMERICA, INC.

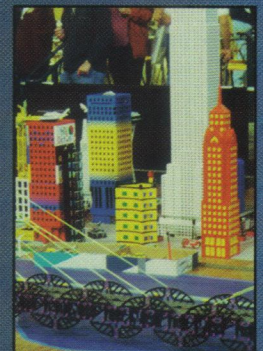
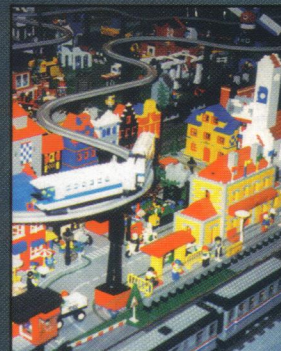
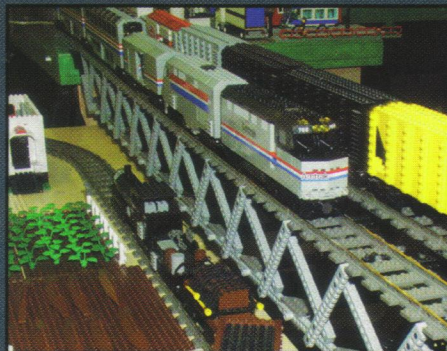


All Aboard for Railroad Fun!

There's nothing as exciting as building your own model railroad and making it run -- just ask the members of the LEGO Train Clubs all over the nation! LEGO Train Club members build their own engines, train cars, and track layouts, just for fun or to display at model train shows.

"The fun part is creating your own creations by using your knowledge and your imagination," says Larry Pieniazek, a member of the Greater Midwest LEGO Train Club and the Michigan LEGO Train Club. "Start by learning about real trains, so that your models can be more realistic."

A great place to get started in this cool hobby is at a model train show. Looking at what other people have built can give you great ideas for your own creations!



LEGO Train Display at LEGOLAND® this Summer!

All the incredible train layouts shown on this page are from the Pacific Northwest LEGO Train Club (PNLTC). Shown at right is their World Record Breaking Train layout with 3,433 feet of track!

A new PNLTC train display will be at LEGOLAND California for the special LEGO Club weekend August 4-5, 2001.

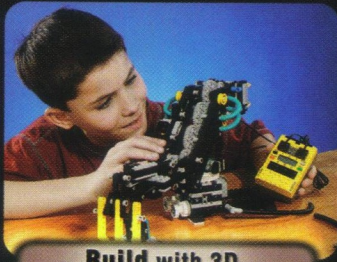


Visit www.LEGO.com/trains to find out more about LEGO Trains.

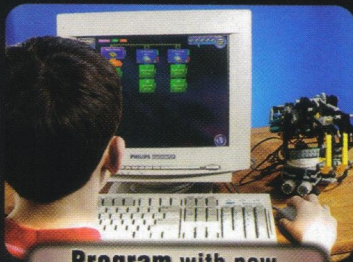
Photos courtesy of PNLTC

LEGO MINDSTORMS™

TO FIND OUT MORE ABOUT THE
ROBOTICS INVENTION SYSTEM™ 2.0
COMING FALL 2001 VISIT:
WWW.LEGOMINDSTORMS.COM



**Build with 3D
on-screen instructions**



**Program with new
"macro" command blocks**



**Activate your
robotic invention**

Wait until she
asks me to pass
the butter!



Create Robots you can Bring to Life and Control



RUN

**Coming next
issue...**
A LEGO® Maniac
reviews the
All New
RIS Version 2.0!

LEGO® NEWS



The LEGO® Life on Mars Encounter Truck Tour is travelling across North America this summer. Check out all the cool interactive LEGO displays inside the truck! Plus, jump around and pretend you are in zero gravity in our inflatable space shuttle, play soccer against a team of aliens and race your own LEGO spacecraft!

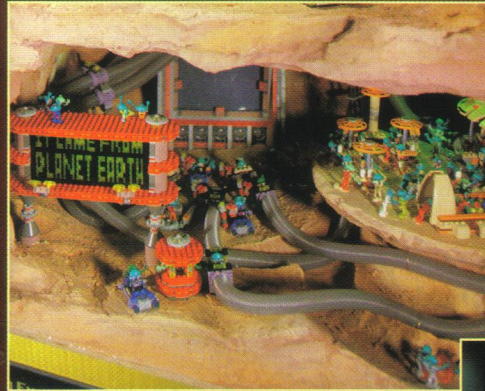
The tour will visit museums and science centers in these cities!

Baltimore, Chicago, Minneapolis, Seattle, San Francisco, Los Angeles, San Diego, Tuscon, Dallas, Houston, Atlanta and Kennedy Space Center Visitors Complex, FL
 Final Location: The truck will visit the LEGO Life on Mars Survival Challenge Grand Prize Winner's school!

Locations are subject to change.

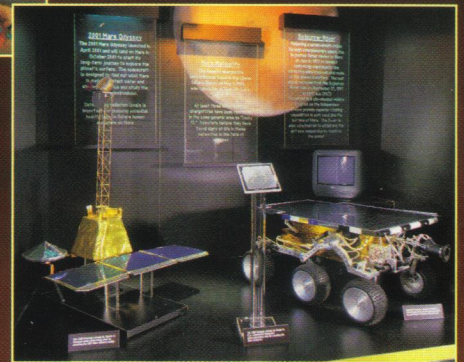
Visit www.LEGO.com/mars for:

- The most up-to-date tour dates and locations.
- To find out about the LEGO Life on Mars Survival Challenge.

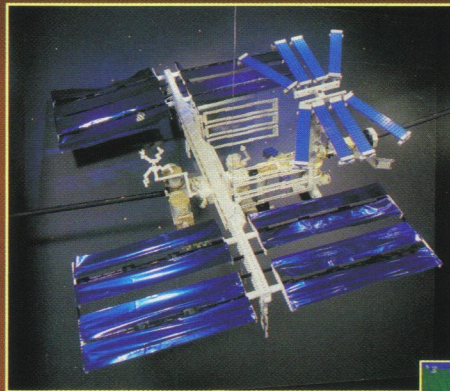


139,272 bricks were used to build the Encounter Truck Tour exhibits - and you'll find 1,000 Martian mini-figures on display!

The Tour features an actual Martian meteorite, plus special models of the Sojourner Rover and Odyssey spacecraft!



This model of the International Space Station took over 70 hours to build! Construction of the real ISS is expected to take five years and 40 space flights to complete.



These Martian models demonstrate two cool facts about Mars. It's colder than Earth (the average temperature is 67 degrees below zero!) and the force of gravity is weaker than on Earth, making it easier to jump high or lift weights!

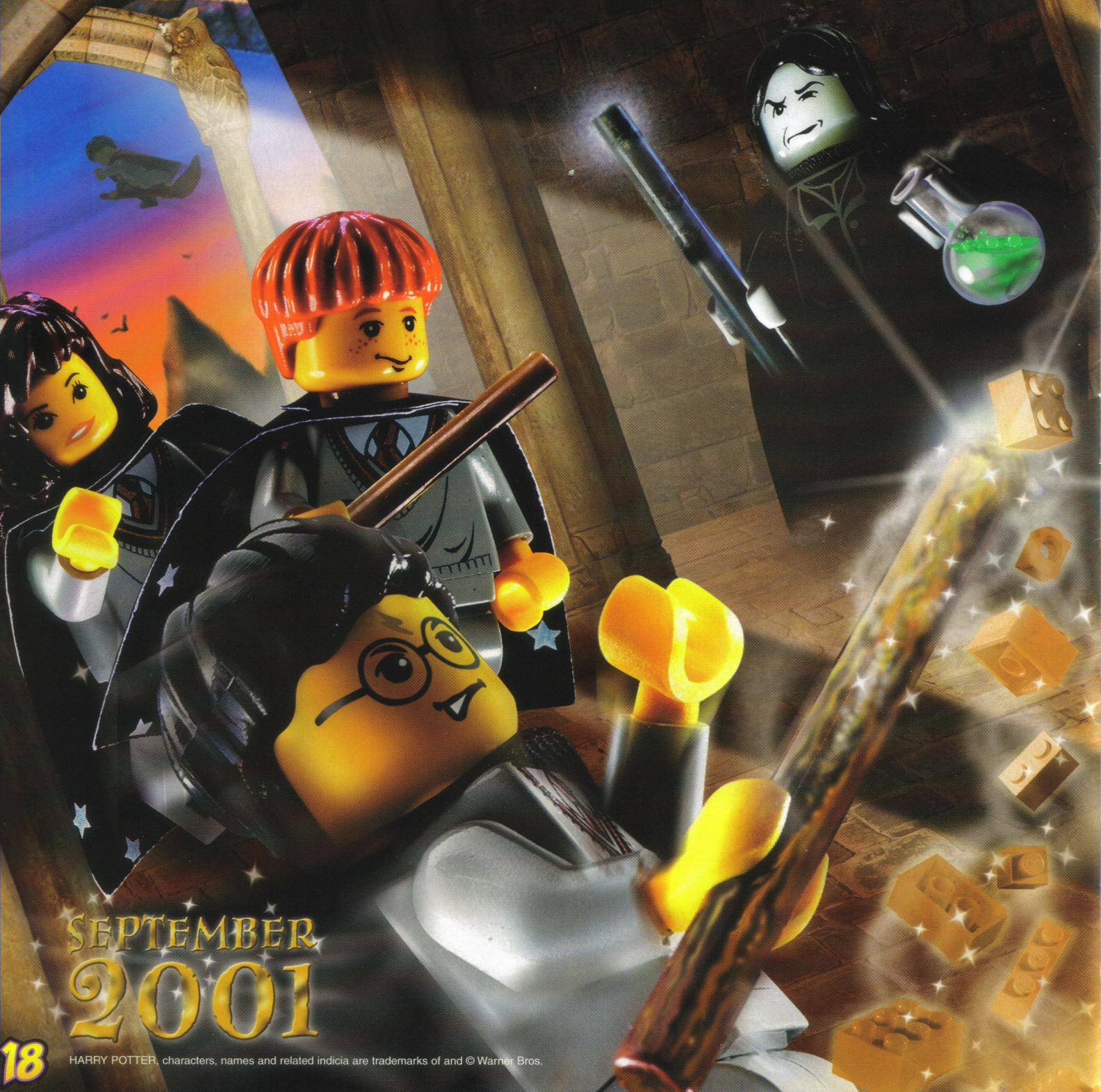


Harry Potter

AND
THE

SORCERER'S STONE™

Sneak
Preview



SEPTEMBER
2001

18

HARRY POTTER, characters, names and related indicia are trademarks of and © Warner Bros.

BIG FUN AT MINILAND!

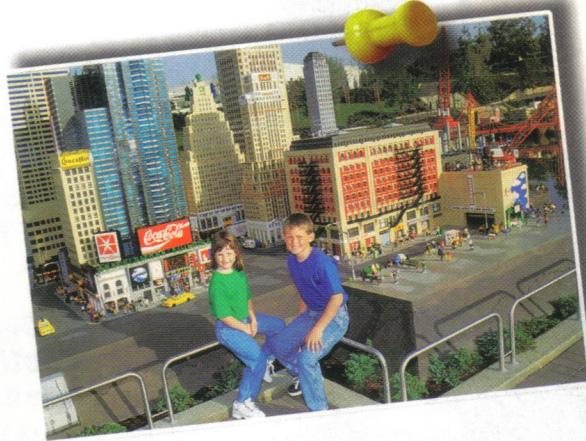
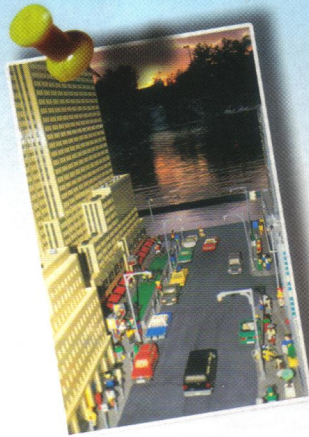
Miniland is one of the coolest places to visit at LEGOLAND® California. It features small-scale versions of New York City, Washington, D.C., New Orleans, New England, and the California coast, all created by LEGO® Master Builders!

It took 100 Master Builders almost three years and 20 million LEGO bricks to build Miniland. That means it would have taken one person over 67 years to do the job!

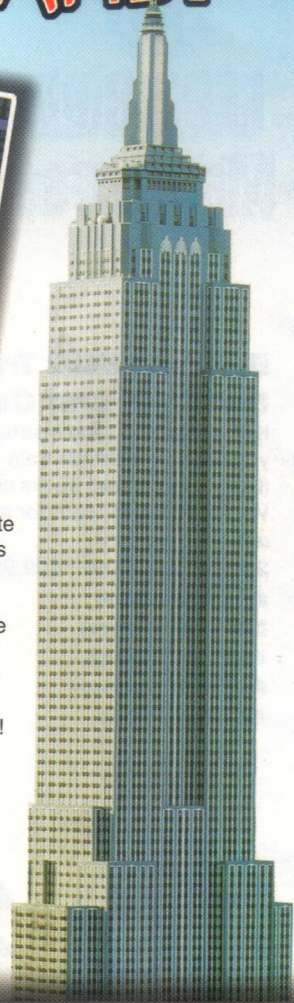
There are over 700 buildings in Miniland, and each one features tiny lightbulbs the size of pencil erasers so that it can light up at night.

Be sure to visit Miniland the next time you're at

LEGOLAND California!



The Empire State Building features 233,500 LEGO bricks. If you stacked all those bricks on top of each other, they would measure 7-1/2 miles high!



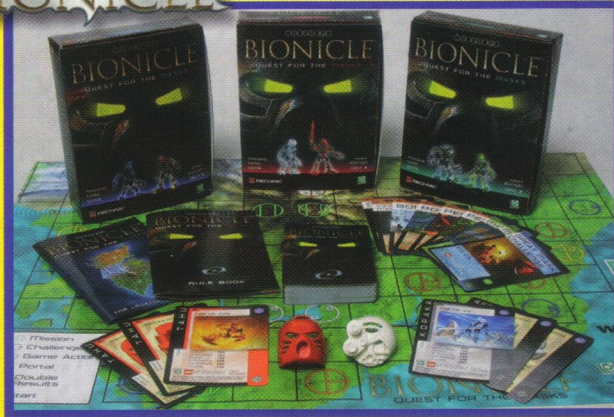
Catch the Action at www.LEGO.com

Visit the **ALL-NEW Build area** at www.LEGO.com/build

- Learn the secrets of LEGO Master Builders
- View a gallery of LEGO creations and submit your own
- Access building instructions
- Find lots of building ideas for young builders at www.LEGO.com/creator
- Get your LEGO questions answered by "The Amazing Redini!" - *And much more!*
- Get tips on movie directing, lighting, sound, and editing at the LEGO Studios Film School at www.LEGO.com/studios
- Explore the world of dinosaurs at www.LEGO.com/dinosaurs
- Enter exciting contests, get a sneak peek of upcoming Bionicle PC and GameBoy Advance games, and see videos of the mighty Toa in action at www.bionicle.com
- Discover the exciting world of Jack Stone and play great new games at www.LEGO.com/jackstone
- Plunge into a new Alpha Team adventure at www.LEGO.com/alphateam
- Join the LEGO Club online -- it's FREE and it's fun
- Meet cool kids just like you at www.LEGO.com/coolkids
- Can Doc, Mac, and BB stop the evil plot of the rebel Martians? Find out at www.LEGO.com/mars, and play exciting games too!

Special Offers for LEGO Club Members!

BIONICLE



ALL NEW BIONICLE™ Collectible Card Game!

Now you can live the Toa's quest for the Masks of Power in the BIONICLE Trading Card Game! Challenge your friends as you compete to see who will survive the perils of Mata Nui and gather the Kanohi Masks. Collect all three Toa Theme Decks! Each deck includes Toa, Tohunga and Turaga cards, 2 BIONICLE masks, ancient map of Mata Nui, Great Mask cards, and much more.

BIONICLE Trading Card Game \$14.99 each
 #4151847 Gali & Pohatu
 #4151848 Kopaka & Tahu
 #4151849 Onua & Lewa

Build a LEGO Train Engine in the Style and Color You Want!

Kits include building instructions and all the pieces you need to build the train engine you've selected. (Lights, motor and tracks sold separately). Ages 8+. Visit www.LEGO.com for more LEGO Trains and accessories.

- 209 pieces each. \$29.99 each
- #KT403 Blue
- #KT404 Green
- #KT405 Black
- #KT406 Brown
- #KT407 Grey

NEW!
Not available in any store



Train Engine with Tender

LEGO LEGEND FROM 1986!

Not available in any store



Relive Legendary Castle Adventures!

Includes innkeeper, guards, knight and more. Ages 6+ 246 pieces.

#10000 Guarded Inn
\$24.99

See a profile of the Guarded Inn at www.LEGO.com/build

To order, call 1-800-453-4652

24 hours a day

Please allow 2 weeks for delivery. Offer good through 9/30/01 or while supplies last.

Please make check or money order payable to LEGO Shop at Home.

(Please do not send cash.)



accepted

or mail to:

LEGO® Club Special Offer
 P.O. Box 1308
 Enfield, CT 06083-1308

Presorted Standard
 U.S. Postage
PAID
 LEGO Direct

Item#	Description	Qty	Price	Total
			Subtotal	
			(Connecticut residents, please add 6% sales tax)	
			Shipping + Handling (special for this offer only)	\$2.50
			Total	

ADDRESS
 SERVICE
 REQUESTED

source code
SP701

LEGO, the LEGO logo, LEGO Minifig, the LEGO Minifig, LEGOLAND, BIONICLE and LEGOLAND logo are trademarks of the LEGO Group. © 2001 The LEGO Group.